

Component Replacement - electrical -



Xperia E4g
E2003, E2006, E2033, E2043, E2053



CONTENTS

1 Replaceable Components 3

2 Component Placing..... 5

3 Additional Repair info 7

4 Revision History 12

For general information about electrical repair related issues, refer to 1220-1336: Generic Repair Manual - electrical

Test after electrical replacement: refer to 1273-1772 Mechanical Test Instruction

All Electrical components are RLC level B, Reversed Logistic Classification, See the Spare Part Handling chapter in Mechanical/Generic Repair Manual 1220-1333.

Do not remove shield can lids (Heat pasta are added and RF performance will be damaged)

1 Replaceable Components

EXPLANATION OF ABBREVIATIONS USED IN THE COLUMN 'COMMENTS' BELOW

COMPONENT LOCATION

P = Primary side

S = Secondary side

REPAIR METHOD

HA = Hot Air (removal & mounting)

ST = Soldering Tool (removal & mounting)

HA/ST = Hot Air for removal - Soldering Tool for mounting

BGA = BGA Station

BH = Bottom Heater

ADDITIONAL INFORMATION

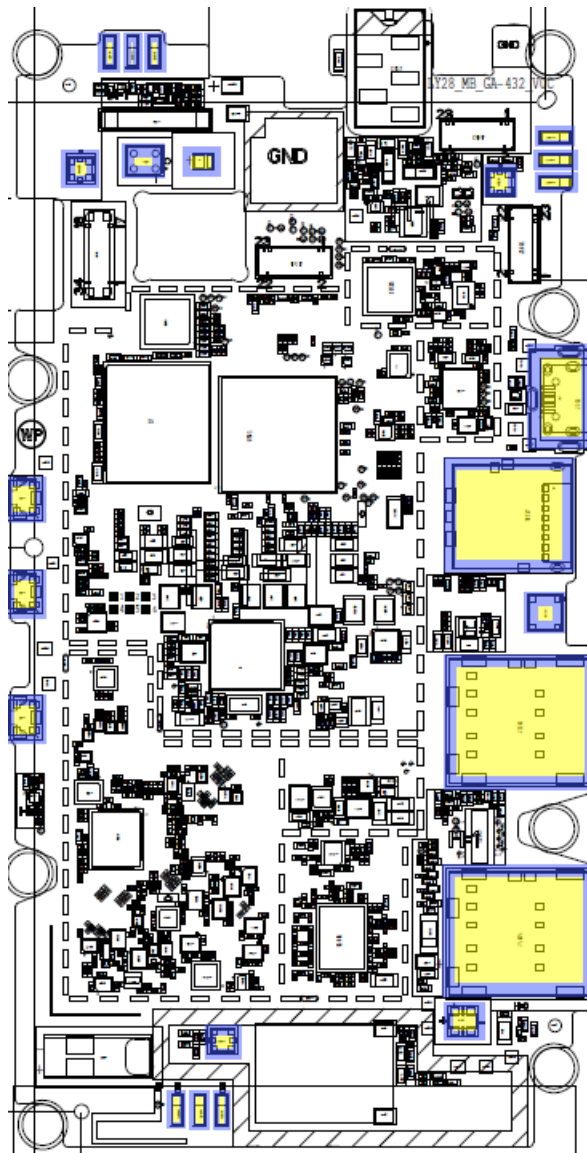
⇒1 (2,3,4, etc.) = Proceed to 'Additional Repair Info' for further instructions in the indicated section(s).

Position	Component	Part no.	Comments
ANT2101	SPR CONN	2313000109W	P HA+BH ⇨1
ANT2102	SPR CONN	2313000109W	P HA+BH ⇨1
ANT2103	SPR CONN	2313000109W	P HA+BH ⇨1
CON2101	RF SWITCH	2302901031W	P HA+BH ⇨2
D1	LED	1770000143W	P HA+BH ⇨3
J202	USB CONN	2336000114W	P HA+BH or BGA ⇨4
J1101	BATT CONN	2303000119W	P HA+BH ⇨5
J1401	MEMS MIC	2220000073W	P HA+BH or BGA ⇨6
J3201	MEMSOCKET	2334000064W	P HA+BH or BGA ⇨7
J3202	SIMSOCKET	2304000123W	P HA+BH or BGA ⇨8
J3203	SIMSOCKET	2304000123W	P HA+BH or BGA ⇨9
PAD1901	SPR CONN	2313000109W	P HA+BH ⇨10
PAD1902	SPR CONN	2313000109W	P HA+BH ⇨10
PAD1903	SPR CONN	2313000109W	P HA+BH ⇨10
PAD2001	SPR CONN	2313000109W	P HA+BH ⇨11
PAD2002	SPR CONN	2313000109W	P HA+BH ⇨11
PAD2003	SPR CONN	2313000109W	P HA+BH ⇨11
RECEIVER	RECEIVER	2240000058W	P ST+BH ⇨12
SMA2001	RF SWITCH	2302901031W	P HA+BH ⇨13
SMA3001	RF SWITCH	2302901031W	P HA+BH ⇨14
SW301	SWITCH	2322000086W	P HA+BH ⇨15
SW302	SWITCH	2322000086W	P HA+BH ⇨16
SW303	SWITCH	2322000086W	P HA+BH ⇨17
SW3101	SWITCH	2322000118W	P HA+BH ⇨18
U301	MEMS MIC	2220000073W	S HA+BH or BGA ⇨19

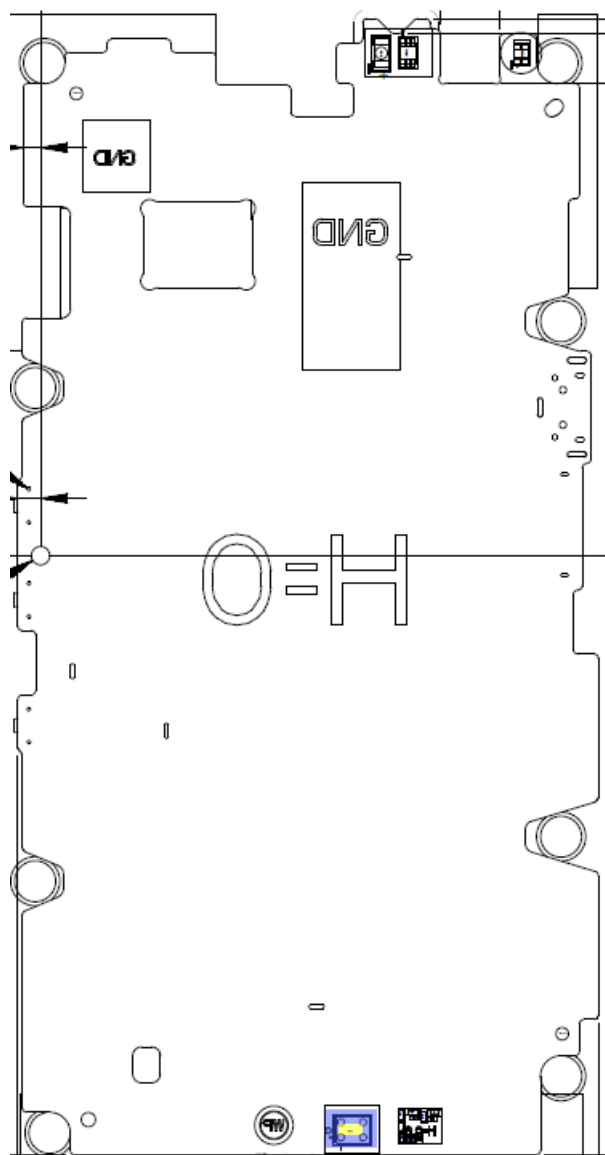
Note: J3203 only valid for dual SIM products.

2 Component Placing

To access the Component Placing document, double-click the icon below.
Applicable for on-screen viewing only – icon not shown on hard-copies.



Primary side



Secondary side

3 Additional Repair info

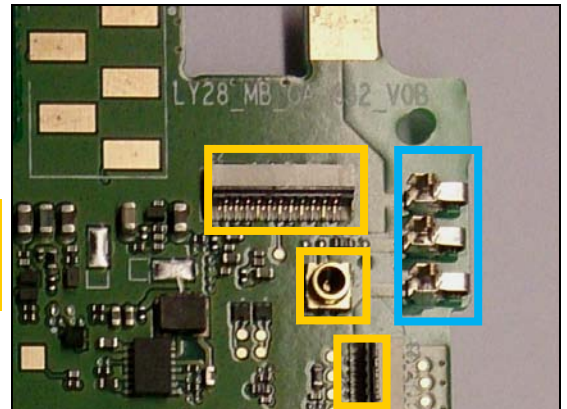
1

ANT2101, ANT2102, ANT2103

Replace if mechanical damaged.

(No or bad WLAN/ BT/ GPS)

Protect the BtB and RF connectors with capton tape!

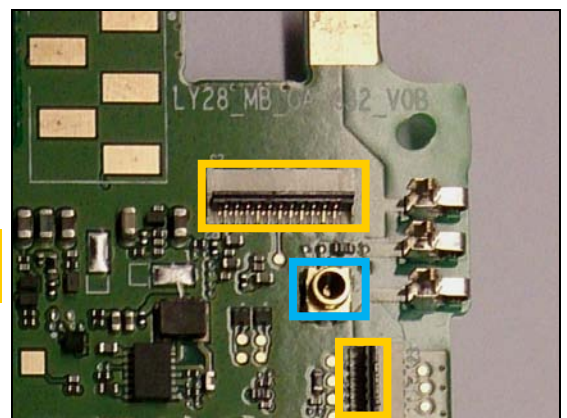


2

CON2101

Replace if open circuit 1-2 (No or bad WLAN/ BT/ GPS)

Protect the BtB connectors with capton tape!

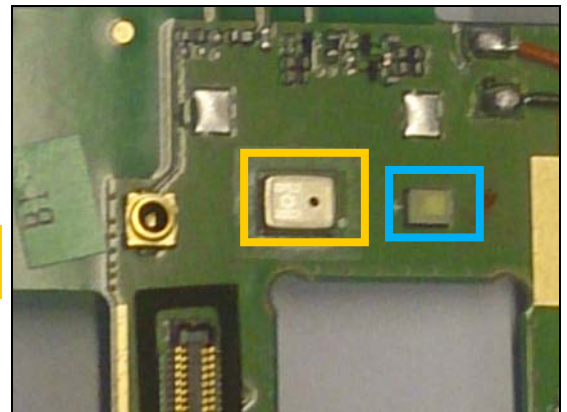


3

D1

Replace if Flash LED not working.

Protect the mic with capton tape!

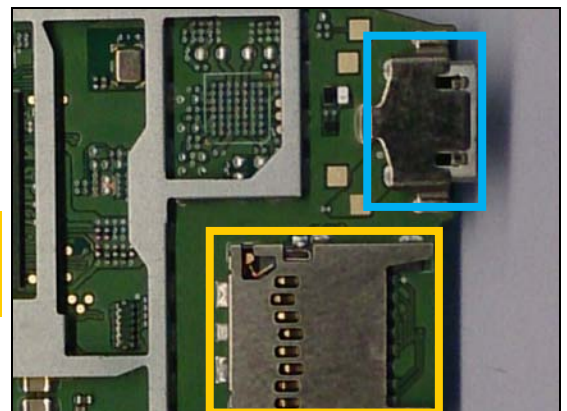


4

J202

Replace if mechanical damaged (USB charger or data transfer not working)

Protect the SD connector with capton tape!



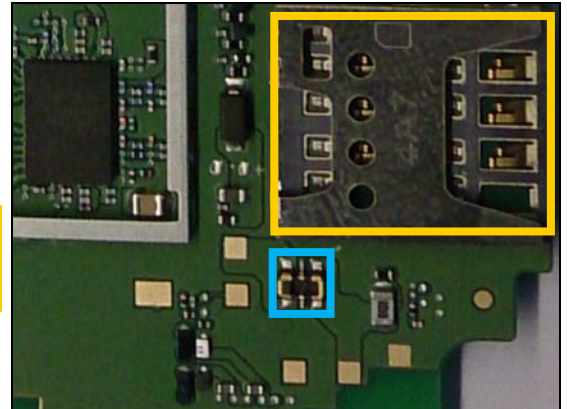
Repair Actions: Additional Repair Info

5

J1101

Replace if mechanical damaged (Phone dead or power off)

Protect the SIM connector with capton tape!



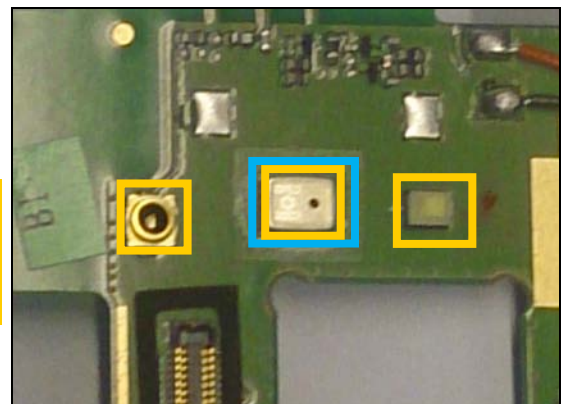
6

J1401

Replace if no audio from secondary mic

When replacing protect secondary mic with capton tape!

Protect the LED and RF connector with capton tape!



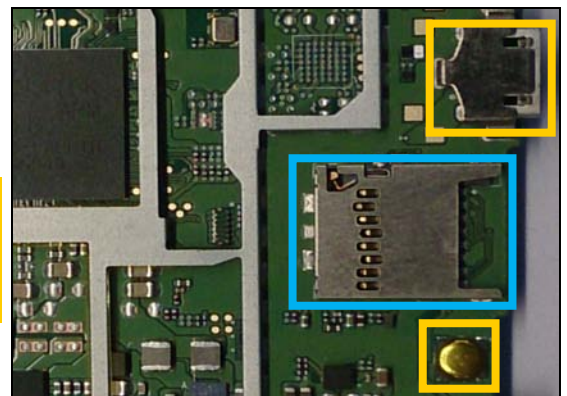
7

J3201

Replace if mechanical damaged.

(No SD card inserted)

Protect the Switch and USB connector with capton tape!



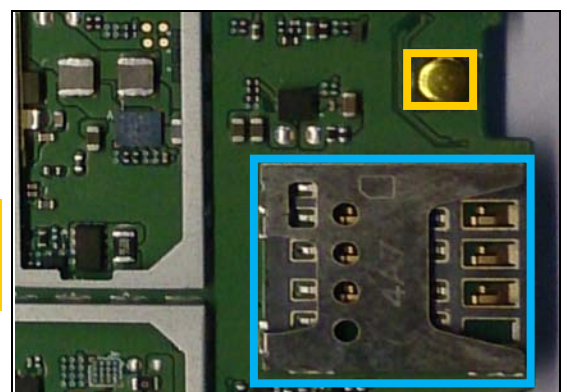
8

J3202

Replace if mechanical damaged.

(No SIM 1 card inserted)

Protect the Switch with capton tape!



Repair Actions: Additional Repair Info

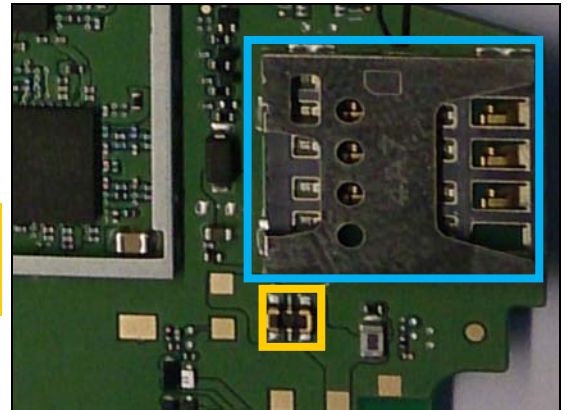
9

J3203

Replace if mechanical damaged.

(No SIM 2 card inserted)

Protect the BtB connector with capton tape!

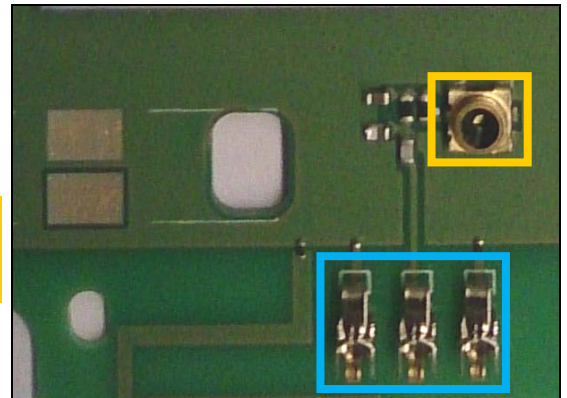


10

PAD1901, PAD1902, PAD1903

Replace if mechanical damaged (Bad network, Main antenna)

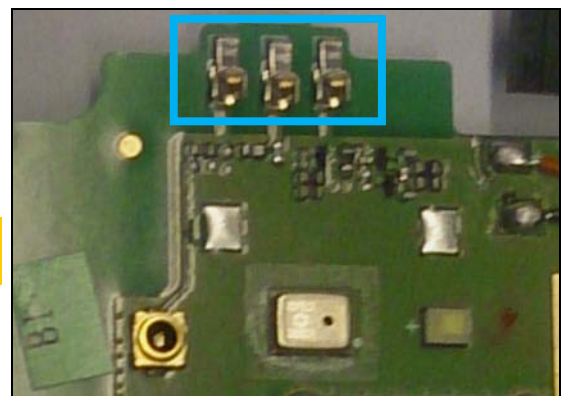
Protect the RF connector with capton tape!



11

PAD2001, PAD2002, PAD2003

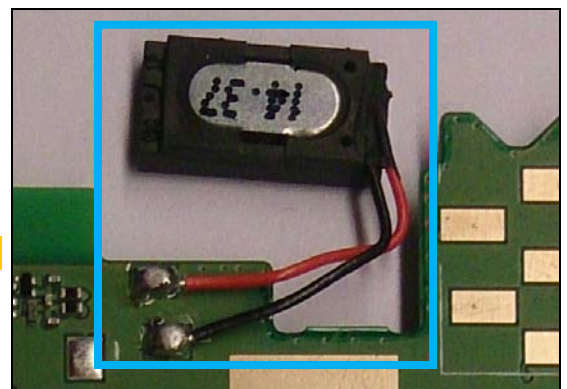
Replace if mechanical damaged (Bad network, diversity Rx antenna)



12

RECEIVER

Replace if no or bad audio from ear speaker.



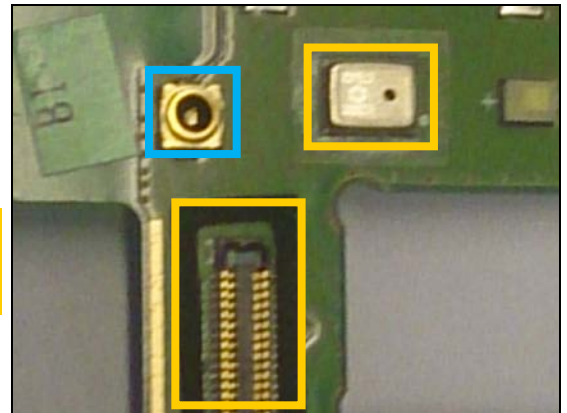
Repair Actions: Additional Repair Info

13

SMA2001

Replace if open circuit 1-2 (Bad network, diversity Rx antenna)

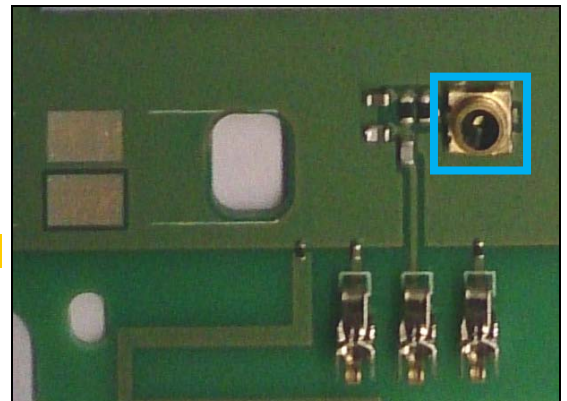
Protect the mic and BtB connector with capton tape!



14

SMA3001

Replace if open circuit 1-2 (Bad network, Main antenna)

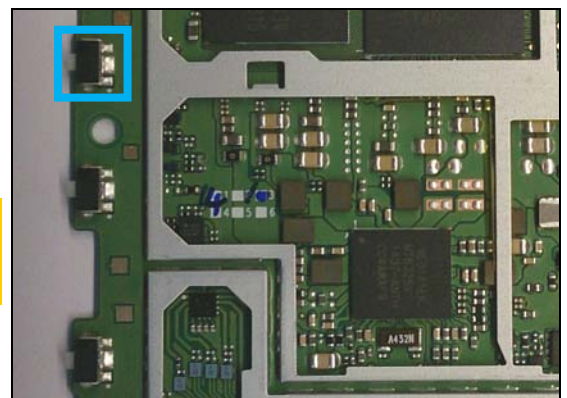


15

SW301

Replace if mechanical damaged or open circuit 1-2 when pushed.

(Power on problems)

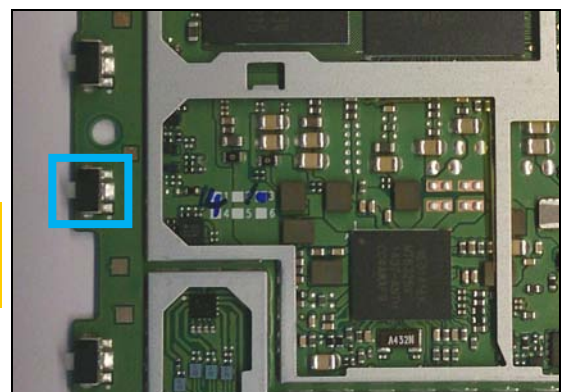


16

SW302

Replace if mechanical damaged or open circuit 1-2 when pushed.

(Volume up problems)

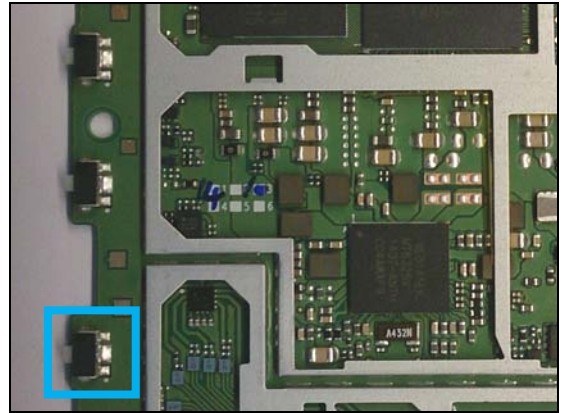


Repair Actions: Additional Repair Info

17

SW303

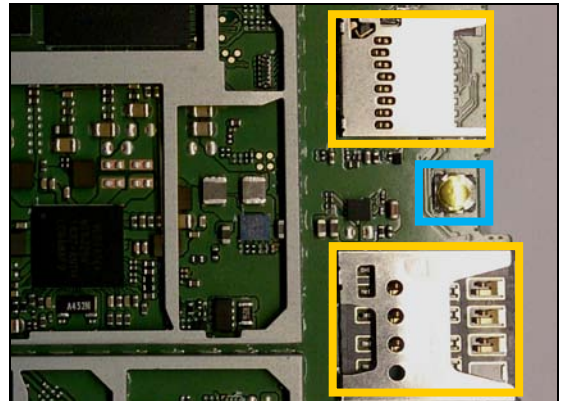
*Replace if mechanical damaged or open circuit 1-2 when pushed.
(Volume down problems)*



18

SW3101

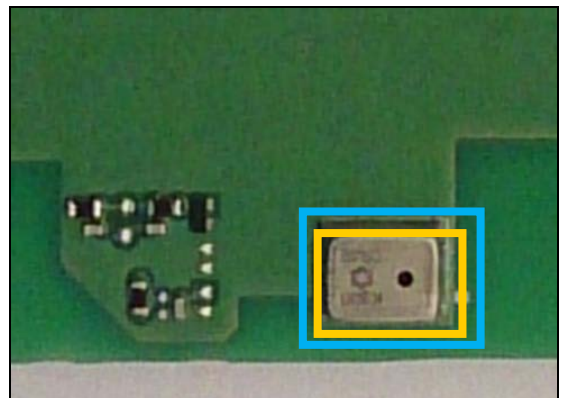
*Replace if reset key not working.
Protect the SD and SIM connectors with capton tape!*



19

U301

*Replace if no audio from primary mic
When replacing protect primary mic with capton tape!*



4 Revision History

Rev.	Date	Changes / Comments
1	2015-03-06	Initial release
2	2015-03-10	No changes